

PROSPECTUS

**Creating Futures
Building Communities**



WAITĀKERE COLLEGE

Welcome To Waitākere College

NATIONAL AND REGIONAL EDUCATIONAL LEADERS

The Waitākere Way

Our three important School Values to live by:

- + Learning/Ako
We are all here to learn
- + Caring/Manākitanga
We all care for each other
- + Respect/Tapu
We treat everyone with respect

National Excellence

At Waitākere College we strive to ensure each student can be the best they can be.
We have received recognition at many levels for our academic outcomes, programmes for students, management systems and ongoing achievement.

Prime Minister's Education Excellence Awards

- 2017 Winner: Excellence in Teaching & Learning - Atatū
Finalist: Excellence in Leading - Atakura
- 2020 Applicants: Excellence in Teaching & Learning - Atatū
Excellence in Wellbeing - Hauora

Education Review Office ERO - 5 Year Review

- 2017 Outstanding report on our systems and consistency of internal review processes to focus on improvement

High quality teaching is the norm at Waitākere College. We have a curriculum adapted to respond to student interests, including e-learning and vocational pathways such as the Medical Science Academy.

Our teachers go the extra mile, making changes during the year based on comprehensive monitoring and forecasting of individual student achievement. Mentoring and coaching for students then follows, allowing us to create an atmosphere to celebrate success in many ways.

Regional Excellence

We are committed to our Waitākere Community of Learners (COL) Te Kāhui Ako O Waitākere, where our 12 schools - primary, intermediate and secondary - work together creating successful educational outcomes for our students.

"Strong schools, strong community - strong community, strong schools"

Our focus is to make a positive difference for your son or daughter here at Waitākere College.

I invite you to visit our school to meet our students and teachers, ask questions about our programmes and see first hand our excellent facilities. You will find here an exciting, caring and challenging community ready to guide your child on this important phase of their life journey.




Mark Shanahan
Principal



2019 NCEA Results

NCEA results position us as a leading educator nationally

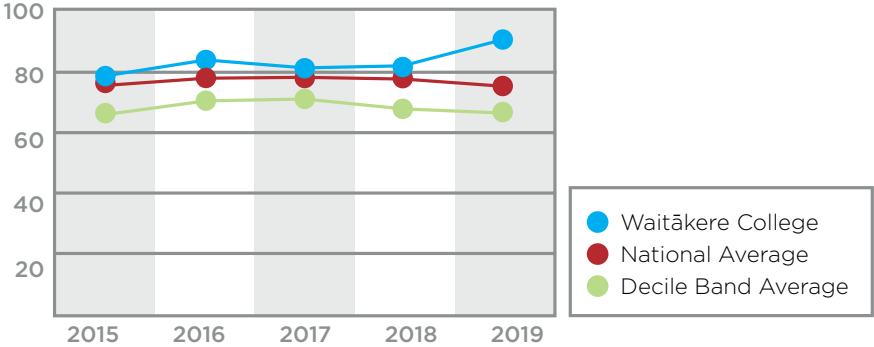
We celebrate the rising tide of outstanding academic results for our students, with NCEA results up at all levels including Merit and Excellence endorsements.

Our past 5 years of results, with most students achieving NCEA Levels passes at well above national averages, show that this is not a short term phenomenon. We celebrate all our school leavers, 96% of whom graduated with Level 2 NCEA or higher, while our University Entrance achievement numbers continue to climb.

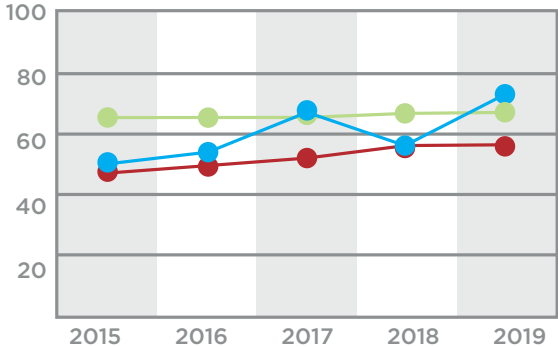
Our students have performed well at the highest level in the Scholarship examinations in subjects as varied as English, Drama, Media, Chemistry, Biology, Physics, Calculus, Statistics, Economics, Classics, Geography, Media, Dance, Art Design, Art Painting, Technology, French and Samoan.



Yr 12 - NCEA Level 2



Yr 13 - NCEA Level 3





“Why Waitākere?

My time at Waitākere College was massively influential in my life, in many ways more so than University. I had the good fortune to be exposed to a variety of experiences, cultures and challenges that set the foundations of who I am, what I love doing, and what I care about...

A good school with high standards, a strong culture and a sense of adventure that I am enormously grateful for.”

Shayne Elliott – Past Pupil
CEO ANZ Australia and New Zealand Group



Jake Starrs 2019 Dux Litterarum

Waitākere College graduates are successful life-long learners

We aim to make learning exciting and challenging for all our students by:

- + Believing that all students can learn
- + Understanding that not all students are the same
- + Offering a wide range of activities and programmes to meet their different needs



We encourage students to see themselves as successful learners by:

- + Setting and reviewing their own learning goals
- + Offering choices of programme, topic, and learning media
- + Building research and study skills
- + Sharing and presenting their work
- + Taking opportunities to coach, mentor and lead others
- + Celebrating their achievements

We aim to get our students' minds engaged by:

- + Connecting with their interests
- + Building on what they know already
- + Helping them discover what they still need to learn
- + Offering them meaningful and challenging tasks
- + Teaching them how to think with explicit thinking strategies



“Waitākere College holds a very special place in my heart. The people that I have met in my 5 years in this College are blessings. The College is very diverse, inclusive and very accepting of anyone from any background. The different cultures are acknowledged and appreciated and this has become a tradition, hence why it wasn't just a school for most of us but our second home. I hold pride when I say that I come from Waitākere College.”

Tiatia Iloni - Past Pupil

Recipient of WDH B Medical Science Scholarship & First Foundation Scholarship.



WAITĀKERE COLLEGE



The three pillars of our College: Parents, Teachers and Students working together

Rich, varied curriculum

We offer courses to cater for many different pathways, from students heading to university or polytech to those aiming for apprenticeships or worthwhile employment. For example:

- + Classics, Physics, Calculus, Photography, Design and Visual Communication.
- + Academies: Engineering, Automotive, Building, Health, Hospitality, Military Services, Medical Sciences.

Excellent quality teaching

- + Quality teachers are our most important resource – innovative, energetic, optimistic, caring, inspirational, hard-working and good-humoured people who enjoy helping young people discover the excitement of learning.
- + We attract more and better applicants for teaching positions because we offer more promotion prospects.
- + Our advantage as a mid-sized school is that you can follow your subject and passion right through to senior levels. Our Curriculum Map shows the wide range of subject choices we are able to offer, beyond the junior school and into years 12 and 13.



“Why Waitākere?”

We wanted to support our local school and our girls really love it here”

Joan Thomas
Parent
Board Of Trustees Chair

An innovative digital environment

Bring Your Own Device (BYOD)

New ways to engage students in learning

Our students learn in many different ways: through talking, listening and interacting, reading and writing, learning practical skills and doing physical activities. Now we have a powerful new tool in the toolbox: e-Learning.

Contemporary digital learning environment

- + Our personalised approach to e-Learning extends to every student from Years 9 to 13.
- + Waitākere College is fully wireless with ultrafast broadband in every classroom, plus 6 dedicated computer suites.
- + Our teachers stay at the forefront of this environment with ongoing professional development to maximise digital opportunities and ensure students stay on the right side of the digital divide.

An internet capable device, meeting school specifications, is a standard item on our stationery list. Information on package price options and recommended suppliers is available on the school website and reception.



What does e-Learning offer?

- + Digital technology skills are a prerequisite for success in the world of work and beyond – our students need to leave school fully equipped to succeed in this world.
- + Digital tools help our young people access knowledge, build sophisticated understandings and connect with others around the globe.
- + Students can move through the learning at their own pace and receive personal feedback from teachers online.
- + They will learn how to be safe, responsible users of technology – good digital citizens.
- + They learn the skills of on-line collaboration as well as creating new content and sharing it with the world.



“The College’s e-Learning vision is being implemented well and all students now have opportunity to use digital devices to enhance learning. Online dialogue with teachers is promoting greater student engagement through frequent feedback about their learning.”

Education Review Office

Shine Enrichment Programme



How will my child benefit from Shine?

We often use the words 'star' and 'shine' to describe someone who stands out in their field. The objective of our 'Shine' programme is to ensure our most able students really shine and achieve their academic and personal potential for their future in our complex world.

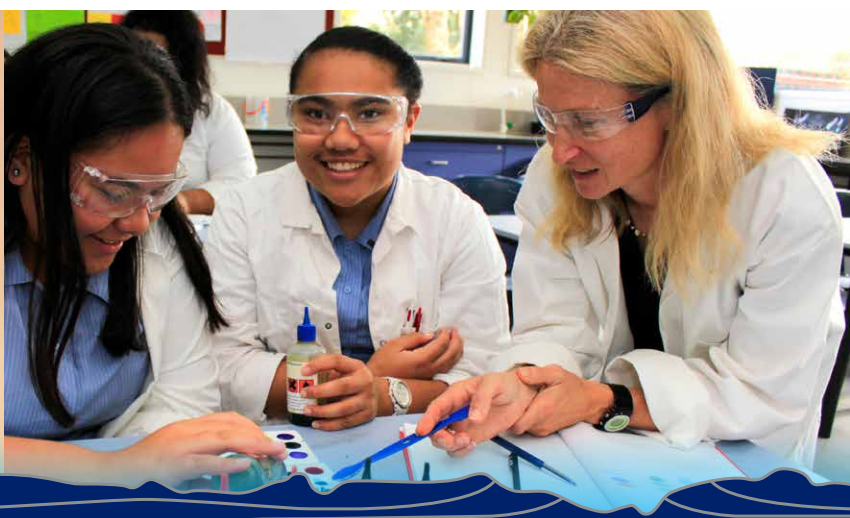
Shine develops students into confident connected learners and strategic thinkers with breadth and depth to their enquiry.

Students are empowered by an accelerated learning environment and senior teaching staff focused on personalised learning.

They remain together through year 9 to 13 for mentoring to achieve academically and aspire to school leadership roles in our College and beyond.

Enrichment for gifted and talented students

- + Streamed Core Classes for year 9 and 10, academic monitoring and mentoring for years 11 to 13.
- + Acceleration – NCEA credits available at Year 10 in all core subjects.
- + 100% Pass rate in NCEA exams. High rate of Merit and Excellence endorsements.
- + Higher Order thinking skills, goal setting and leadership growth.
- + Lifelong benefits from social networks and the stimulus of intellectually compatible peers.
- + Teaching staff stretch students to set goals and reach high achievements.
- + External and internal competitions, activities and excursions to extend and challenge.
- + Projects contributing to the community.



Leadership



We offer students the chance to grow as leaders at all levels.

Within the junior school this could be as e-leaders, librarians, in sports teams, as ambassadors to contributing schools, as helpers at school events and as junior Prefects.

Within the senior school there are many different opportunities such as:

- + Becoming head Prefects for their house or Prefects with special responsibilities. This group takes part in special leadership programmes throughout the year
- + Student Council, Sports Council, Environmental or Arts & Culture councils
- + Training in peer mediation, harassment prevention, peer sexuality contact people, peer tutors or kiwi buddies for International Students

Prefects, premier sports teams, high academic achievers and other key senior leaders wear distinctive striped blazers in recognition of their leadership and to inspire all students.

See uniform pages in this Prospectus.

“Students learn social responsibility and develop a meaningful sense of service to others. High levels of action, care and support enable students to learn and succeed in their own way.”
Education Review Office



Sports

Develop your fitness and technical skills with opportunities to be involved at all levels from recreational to representative.

- + Sports Academies offer focused training sessions with expert coaches. Scholarships available. (Application and trial dates details on request – see facing page)
- + Great facilities and equipment, quality mentoring and management, facilitated by our Director of Sport.
- + An annual Sports Awards ceremony to recognise our top sports people, with a Dux Ludorum as the supreme award.



Enjoy a wide range of sports* and activities including:

AFL	Athletics	Badminton	Basketball	Boccia	Cricket
Cross Country	Diving	Dragonboating	Equestrian	Gymnastics	Hockey
Kayaking	Lawn Bowls	Netball	Rockclimbing	Rugby	Orienteering
Petanque	Special Olympics	Soccer (Football)	Softball	Swimming	Tag
FootballTennis	Touch Rugby	Tramping	Triathlon	Volleyball	Waka Ama
Waterpolo	Weights Room	Wrestling			

** Subject to change*



Sports Academies

Year 9 Sports Academy

The year 9 Sports Academy runs 5 of the 6 timetabled days in the school week. It has a generic sports and physical conditioning focus, with extra training sessions with expert coaches that takes fitness and technical skills to the next level.

- + The year 9 Sports Academy is a timetabled class which is available for elite athletes across all sporting codes
- + If your main code is football, rugby, netball or basketball you would be expected to attend the training squad sessions
- + This is a year-long course, your non-sport option choices will reduce from eight to four

Areas covered within the programme are:

- + Physical fitness – Cardio, plyometrics, circuit training, core strength
- + Coaching introduction + Nutrition + Goal setting + Leadership

Entry into the programme

Entry into the Year 9 Sports Academy will be a selection process using enrolment information and information provided on the academy/ scholarship application forms along with trials, consultation with sports coaches, PE teachers and Intermediate schools via the sports activator. Students will be expected to apply for entry into the programme and if accepted will sign a contract agreeing they will play sport for the school as well as maintain standards of academic effort and focus in all subjects.

Failure to follow the contract can result in removal from the course.

All Intermediate school students entering Waitākere College, local to the school or not, who wish to perform at an elite level are encouraged to apply.



Specialist Academies

If you are in a Training Squad, you will attend training sessions once a week. This may be during the school day or before/after school.

Academies

- + Football Academy
- + Netball Academy
- + Rugby Academy
- + Basketball Academy



Arts and Culture

In our mid-sized school, there are many opportunities to follow interests and discover new talents.



Our students shine in arts and cultural activities

A wide range of cultural activities provides opportunities for students to develop talents, acquire new skills, and discover the work of other artists.

- + Culture groups including our Kapa haka, Indian, African, Chinese, Japanese, Filipino and our many Pasifika groups.
- + Music and Drama opportunities include: school show, talent quest, a-cappella singing, jazz band and solo performances
- + Dance, Performance, and Media – we have more than 100 participants in our award winning stage challenge entries. We produce plays and dance shows, and our annual Media awards showcase student-made films
- + Art and Technology – our art exhibitions, auctions of student work, Wearable Art and Trash to Fashion all feature cross-faculty talent
- + English and Languages – creative writing, debating, public speaking
- + Arts and Culture Week celebrates achievements across diverse areas and we enjoy an annual Arts and Cultural Awards Evening, where we present our supreme award, Te Taumata Toi
- + Student exchanges and visits from overseas schools are also part of the cultural life of the College.



Performing Arts Academy



Our hands-on course in Drama, Music, Dance, Wardrobe, Makeup and Costuming, Stage Lighting, Short Film Production and Stagecraft.

- + Develop stagecraft skills and performance skills
- + Explore a range of dance styles
- + Learn to read music, compose and perform confidently
- + Opportunity to be part of a variety of school-wide and public events, as audio-visual technicians & stage support
- + Gain confidence in dramatic expression
- + Create a wearable art show and learn theatre make-up and costuming
- + Learn film and editing skills, special effects and sound techniques.

** Scholarships Available – application by audition (details available on request)*



WAITĀKERE COLLEGE

Overseas learning experiences

2019 Greece and Italy

The opportunity for international travel:

- + Reinforces classroom theoretical discussion with first-hand experience of culture and history
- + Opportunity for authentic and traditional experiences in a cultural setting, that broadens critical thinking and decision making
- + Improves understanding, appreciation and opens student minds to the different views, aspirations and lifestyles of other young people from around the world, and how that differs from NZ



- + Raises motivation and achievement as learning takes new meaning

- + Develops a Connected Global Community and lifelong memories and relationships with international host families/friends

- + Develop a sense of gratitude and an appreciation for our nation

- + Promotes leadership, mindfulness and resilience

- + Opportunity to showcase cultural knowledge and understanding

In addition, a vibrant range of international students attending our College, plus guest speakers from across the globe, further expose our students to new ideas and experiences.

2019 Samoa



2018 Vietnam

“The Board’s strategic vision reflects the valued educational outcomes that the community wants for its young people.”

Education Review Office



Inclusion Support Centre

The Inclusion Support Centre (ISC) is a bustling, thriving unit for 50 students. The ISC is supported by teaching staff, teacher aides and therapists.

Our Vision:

- + We aim to be the centre of choice for students with special educational needs.
- + We aim to offer challenging, innovative and future-focused programmes which lead to the increasing independence of our students.
- + We will focus on the holistic well-being of the students.
- + Our staff will be recognised as highly effective and reflective practitioners who have the commitment and skills to make a difference for our students.



Programmes Offered

Total Inclusion: Students have the opportunity to be mainstreamed for their entire academic programme and supported with supervised study time in the Centre with teacher aide support in class as necessary.

Partial Inclusion: It best serves some students to attend select mainstream classes and study Correspondence School courses within the Centre with academic support to complete their academic timetable.

Fully Supported: Students who require intensive instruction or ongoing therapy in small groups or one-to-one are provided for in a supportive classroom environment within the Centre.

Our Achievements:

- + Students attending tertiary institutions with scholarships.
- + Students in full and part time work through our transition programme.
- + Students leaving school with the confidence to live rich and independent lives.



Our Mission

Te Whare Rangimarie/The Inclusion Support Centre is a place where students with specific needs can grow emotionally, socially, cognitively and physically in a challenging and supportive environment which encourages independence.



WAITĀKERE COLLEGE

‘At first I was nervous and couldn’t talk, but I was able to get used to it quickly because you treated me kindly. Thank you very much for your fun school life. I have learned a lot about New Zealand so I want to share it with my family’
- Yuno and Hinari, Japan

‘I enjoyed learning a new part of the English language every day as I could see that I was improving. I made friends and had experiences I would never have had in my country. I have also achieved my NCEA Level 3 and University Entrance credits this year’
- Chanlong, Cambodia

International Students

Waitākere College has considerable experience and success in educating international students from every part of the world.



We create a personalised programme according to each student’s interests, goals and abilities. Our purpose is to help each student discover their own talents, and to encourage ‘enquiry thinking’ – to challenge ideas, work collaboratively, connect globally, think differently, and to be resourceful and resilient. Cultural diversity and expression are highly valued at our College, exposing students to students from many backgrounds to prepare them for future global careers.



'I've participated in many school activities such as becoming a librarian with my kiwi buddy. I've also gained knowledge of how to use digital technology in classes. Next year is a challenging year for us as we are going through our career path so must work hard with full determination.

– Amisha, fiji

'I studied at Waitākere College and learned and experienced the diversity of New Zealand. New Zealand is full of nature, the air is clear and you can see many stars'

– Riko, Japan

Academic

- + Start studying any time of year, for any duration from 4 weeks to 5 years
- + Our subject range is very broad, and academic subjects may be combined with technical subjects at all levels. A personalised programme will be created
- + We have strong support services for international students, including very experienced ESOL (English for Speakers of Other Languages) teachers who use interactive teaching methods. Students of all English language abilities are accepted, from beginners to advanced
- + Weekly monitoring and regular forecasting helps us to identify which topics the student needs to reinforce. We have a well-resourced Careers Department to assist all senior students
- + NCEA (National Certificate in Educational Achievement) is New Zealand's senior secondary student qualification, recognised for University entrance worldwide. It uses internal and external assessment tasks across many topics, to build up the required number of credits according to the future Tertiary study goals of each student. NCEA is generally studied in Years 11 to 13, but some NCEA credits may be obtained in Year 10.

“Waitākere College has high level systems to maintain the quality of both education and pastoral care for international students. Progress towards achievement is well monitored and students are well integrated into the College's educational, community and cultural experiences.”

Education Review Office

Personal Growth

- + Unique Maori and Pasifika activities are available to our students, alongside 'Kiwi homelife' experiences
- + There are many attractions and events nearby; our College is only a 5 minute walk to the train station, with easy access to excellent community, sport and recreational facilities, parks, libraries, shopping, dining and entertainment, business and transport centres. Spectacular beaches and native rainforest are close by
- + International students are encouraged to join in our school clubs, or try one of our many sports, as a great way to make new friends and help with English conversation skills.

Pastoral Care

- + Waitākere College is a signatory to the NZ Code of Practice for the Pastoral Care of International Students. This unique system ensures outstanding protection and peace of mind for families
- + Students are placed with high quality homestay families, who have passed a robust checking process including a Police Check. Homestay families are supervised through visits and interviews, and students are supported through regular meetings ensuring they feel safe and comfortable both inside and outside school
- + Caring 'Kiwi Buddies' are assigned to help new students to adjust to school and NZ life, and we provide an ongoing Orientation programme.

Contacting the International Department

Enrolling an international student is easy:
Email international@waitakerecollege.school.nz
Phone +64 21 355 083 or +64 9 838 6097



Technology Subjects in Year 9

All Technology courses give students foundation knowledge and the skills needed for all Technology options at Waitākere College for year 10 and beyond.

DESIGN VISUAL TECHNOLOGY (DVT)



This course develops problem solving skills through design and creativity. Students experiment with sketching, presentation and model making using Computer Aided Design.

In Year 9 all students do:

COMPUTER DIGITAL TECHNOLOGY (CDT)



A foundation in computer literacy, coding, robotics and use of the 3D Printer.

FOOD NUTRITION TECHNOLOGY (FNT)



Students develop kitchen skills through designing and making food products as well as nutritional information.

SOFT MATERIALS



An introduction to fashion using mixed materials to make a range of products.

Year 9 option subjects are:



Senior level projects

HARD MATERIALS



Wood and Metal Design make projects using our leading edge facilities



Vocational Programmes Year 12 & 13

What is Gateway?

Gateway is a recognised programme designed to strengthen the pathway for students from school to work through structured workplace learning.

The programme involves a student entering a workplace one day a week, for a period of time. This hands-on "real world" learning helps students acquire technical skills relevant to their chosen vocation in addition to general 'work ready' skills such as time-management and workplace communication.

Gateway programmes available are:

- + Gateway L2/3
- + Customer Service & Retail L2/3
- + Employment Skills L1/2



What are Academies?

The Academy programmes are funded by the Tertiary Education Commission as an initiative to build a highly skilled and adaptable work force. The Academies cover a range of vocations and involve a combination of in-school and tertiary based training, with work experience available for selected students. Academy students engage in a comprehensive learning programme focussed on the development of theoretical knowledge and practical skills targeted at their chosen vocation. We are recognised as a best practice model for our successful implementation of these programmes. 'work ready' skills such as time-management and workplace communication.

Academies available are:

- + Automotive Academy L2/3
- + Building Academy L2/3
- + Engineering Academy L2
- + FIT (Fitness Industry Training) L2
- + Health Careers Academy L2/3
- + Hospitality Academy L3
- + Mahi a Toi Academy L2
- + Mechatronics Academy L2
- + Military Services Academy L2
- + Uniformed Services Academy L3 (Police, Army, Navy, Air Force, Customs)



WAITĀKERE COLLEGE

Curriculum Map

This shows subject pathways offered at each level.

Key

COMPULSORY SUBJECTS

FULL YEAR OPTION

HALF YEAR OPTION

TERM OPTION

*Delivered by correspondence.

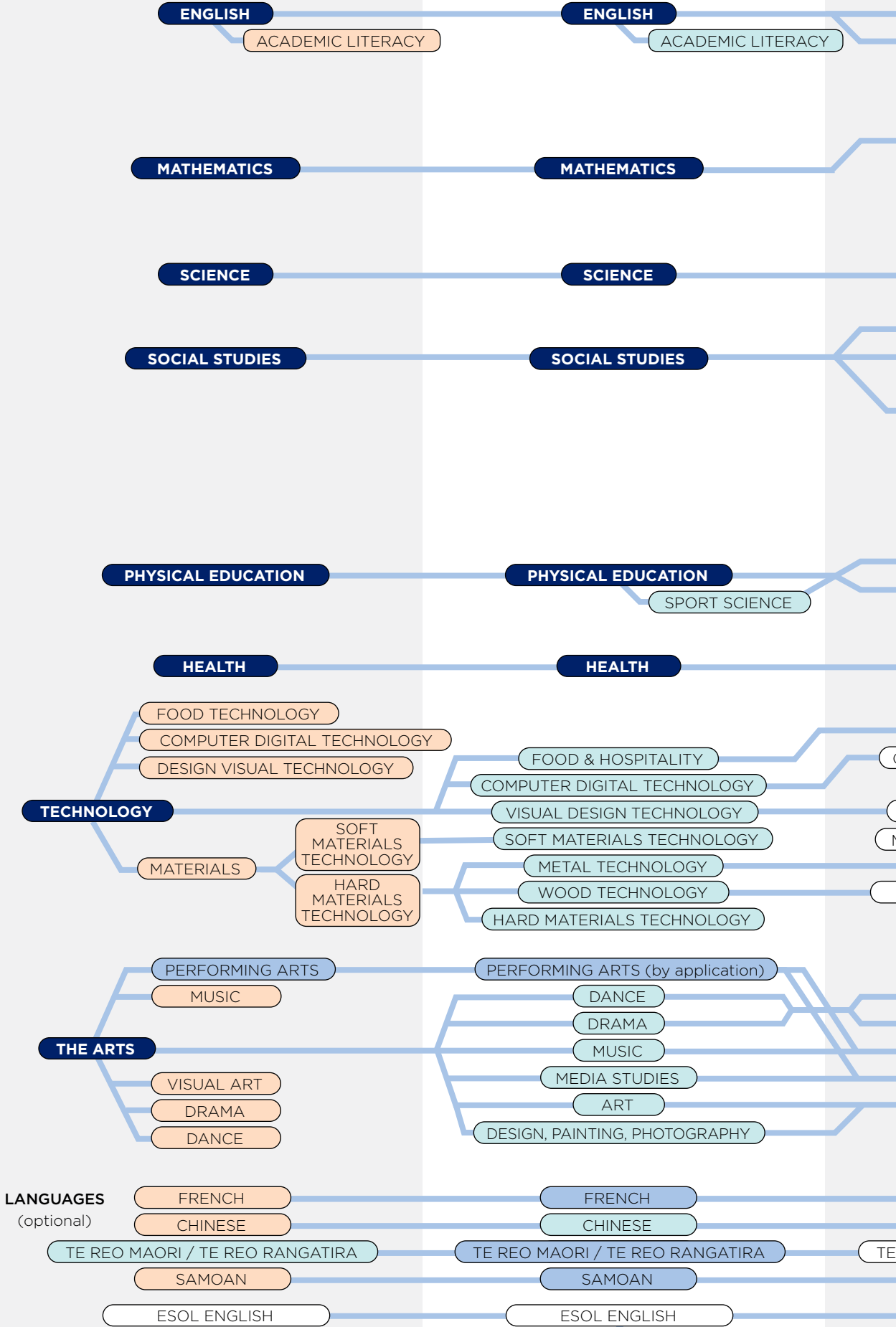
All chosen courses depend on approval by Head of Curriculum.

Vocational Academies

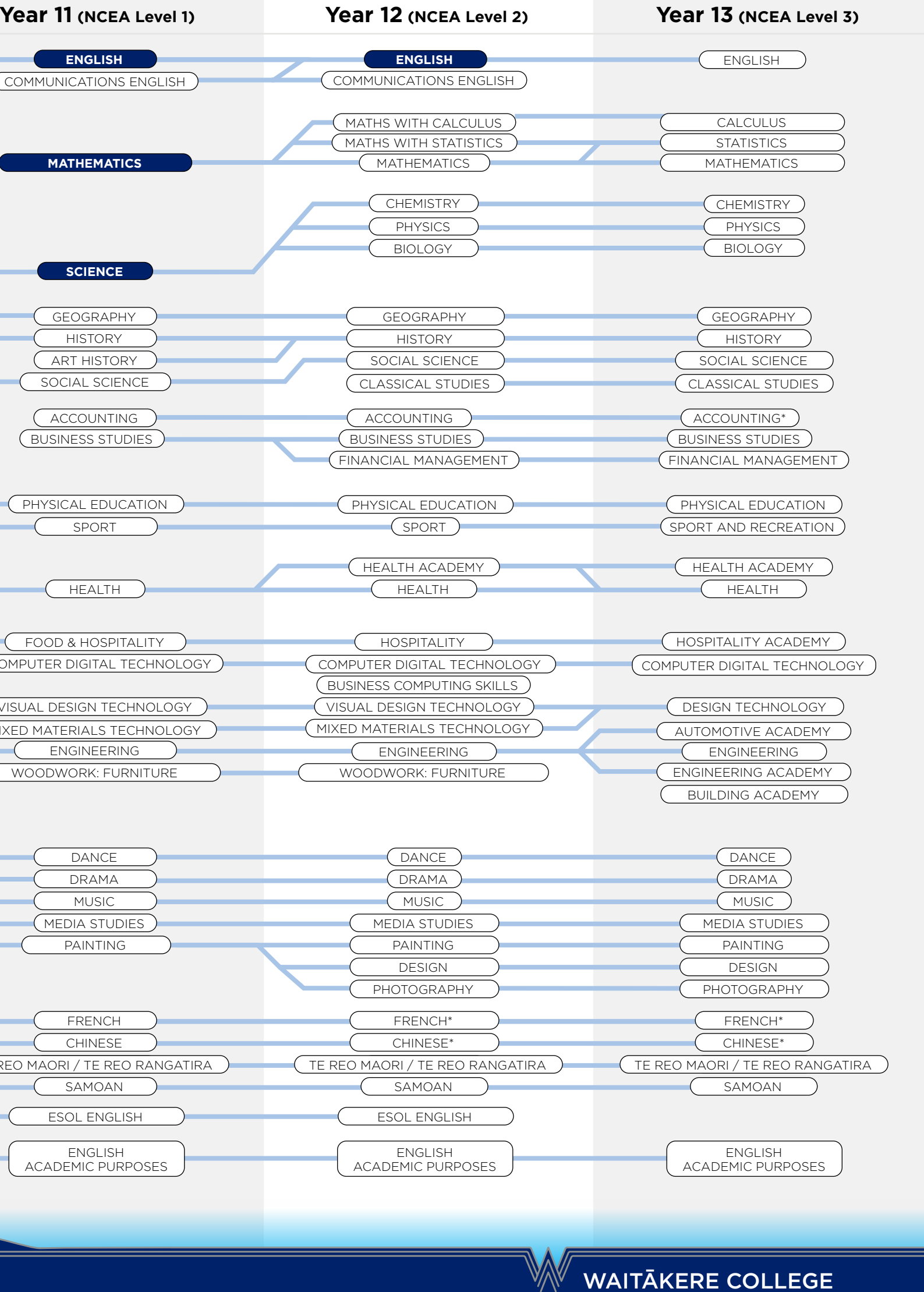
- Automotive
- Building
- Customer Services and Retail
- Engineering
- Health Services
- Hospitality
- Gateway
- Mechatronics
- Medical Sciences
- Military Services
- Mahi a Toi

Year 9

Year 10



Course pathways correct at time of publication.



A Sense of Belonging

We are focused on providing a positive environment for students to flourish in.

A caring community

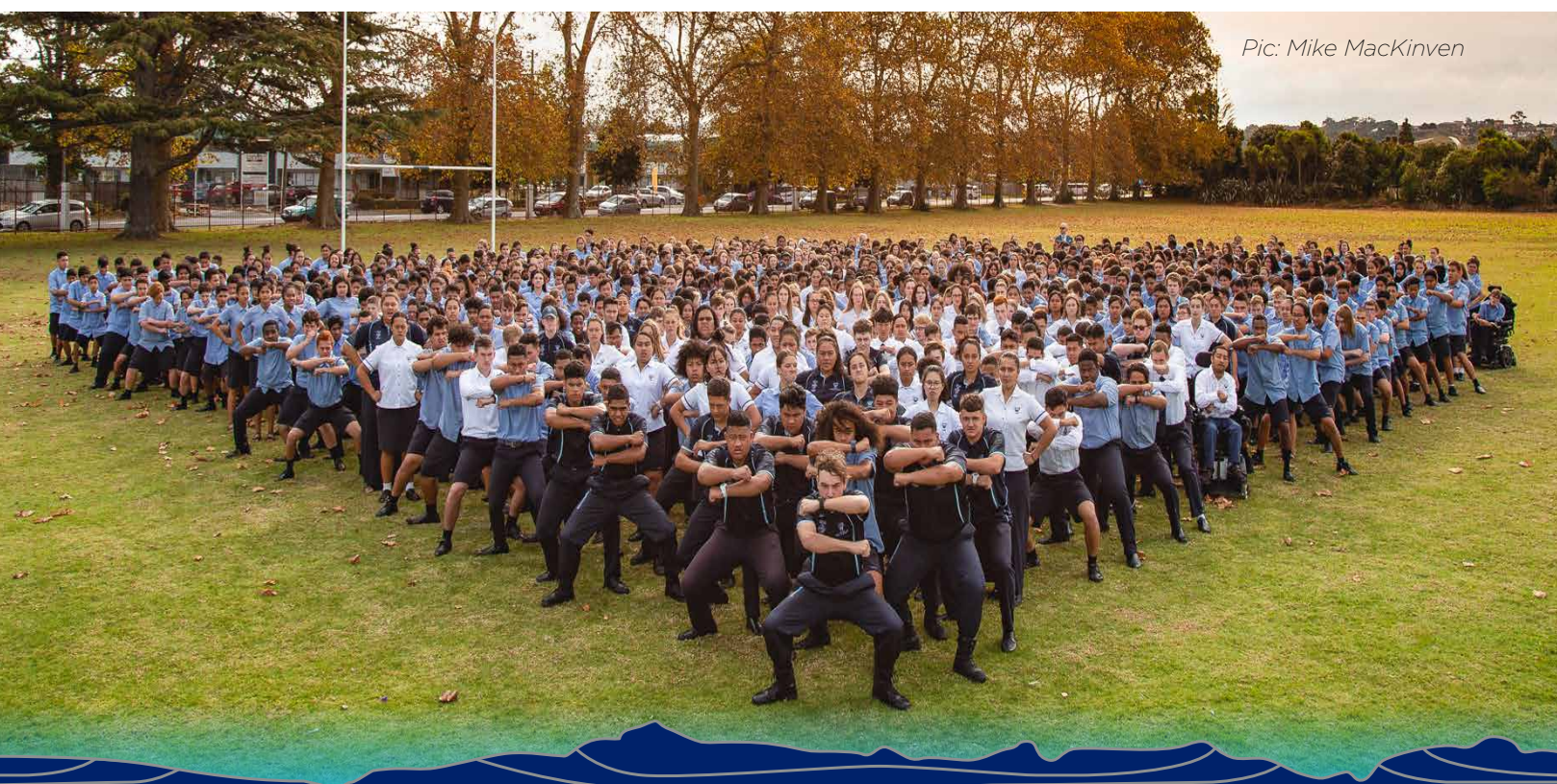
- + High expectations of standards and behaviour, with consistent consequences if not met
- + A comprehensive harassment prevention programme which empowers students
- + Trained peer mediators help students resolve conflict at an early stage
- + School-wide active restorative practice implemented by staff, students and pastoral care team.

A place to be proud of

Our attractive facilities include:

- + Indoor Astroturf facility adjacent to large well-drained fields, Sports Pavilion, Gymnasium, Weights training and Activity rooms
- + Jackson Auditorium, where our Performing Arts Academy learn stage craft, and a range of school and community events are held.
- + State-of-the-art Library, including one of several computer suites around the school
- + Modern and welcoming Wharehau, fronting our culture and languages department
- + Refurbished Technology block, with new Engineering and Woodwork rooms
- + Purpose-designed six laboratory Science block
- + Refurbished Art, Design and Photography suites
- + Purpose-built Dance and Drama studios with sprung wooden floors
- + Music and Media suite including three studios and a keyboard laboratory
- + Friendly Student Centre including Careers Centre, guidance and nurse facilities
- + Senior and International student courtyard adjacent to Food Technology rooms

“Teachers continue to develop ways to ensure that their teaching is relevant and authentic for students so that it connects to the real world.”
Education Review Office



Pic: Mike MacKinven



Wellbeing

As well as liaising with partner agencies as required, in-school wrap-around pastoral care for the wellbeing of students and staff consists of the following services:

- | | | | |
|--------------------------------------|-----------------|-----------|--|
| + Careers advisors | + Mentors | + Nurses | + Dental care |
| + Deans | + Youth Workers | + Doctors | + Waitakere College Foundation |
| + Learning support and teacher aides | + Counsellors | + Physio | + Regular Professional Development for all staff |

How to Enrol

New Zealand citizens and permanent residents

Note: There are different procedures for International Students. You should contact the International Department on 09 838 6097 or email international@waitakerecollege.school.nz

Enrolment year 9

Whether you live in or out of our home zone you are welcome to make an appointment to find out about the College. Contact our front office staff on 09 836 7890 ext 0 to make an appointment. Parents or caregivers please bring:

- + The student! We cannot do enrolments unless both student and parent/caregiver are present
- + Either a birth certificate or passport as proof of the child's age and identity
- + Evidence that you live in the school zone e.g. a phone or power bill
- + A copy of a recent school report for the child
- + Emergency and medical contact details.

If you want to know about any of the following, mention your interest when you make the appointment:

- + Shine – Our Enrichment for Excellence programme for gifted and talented students
- + Performing Arts Academy option programme for students with performing talent and enthusiasm
- + Inclusion Support Centre – Physical Disabilities Unit (contact the Head of Department 09 836 7890 ext 868)
- + Learning Support or ESOL support (please make a note of any learning needs on the enrolment form)
- + Financial assistance (note: it is important to apply early)
- + Out of Zone Applications – Your name will go into a ballot for available places. Your chances of gaining a place are good provided you make your application in time for the ballot.

Full information about our school zone is available from the school office or see our website for a list of street names in your zone, or see map overleaf.



Uniform Combination Ideas for Juniors

Years 9, 10 and 11

Junior girls:

Blue school shirt (trousers/ shorts/skirt optional year round).

For warmth, choice of Non-striped blue blazer, Anorak or Polar fleece jacket.



Non-striped
blue blazer



Anorak



Polar fleece
jacket

Junior boys:

Blue school shirt trousers or shorts optional year round).

For warmth, choice of Non-striped blue blazer, Anorak or Polar fleece jacket.



Non-striped
blue blazer



Anorak



Polar fleece
jacket

Uniform Combination Ideas for Seniors

Year 12 Girls and Boys:

Blue school shirt unless they have gained NCEA Excellence Endorsement, or the Principal has awarded them the option to wear a white school shirt (see below*).

Blazer optional with either colour shirt. The long school skirt is optional for girls Years 12 & 13, if they qualify for an Achievers jersey (see below**).

All year 13 girls can wear the white school shirt. For year 13 boys, a white dress shirt (tucked in, sleeves down) with school tie, done up correctly.

For warmth, choice of non-striped blue blazer, Anorak or Polar fleece jacket.



Earned Uniform Items



*Blazers (pin-striped):

The right to wear these 'number ones' may be awarded by the Principal to Prefects, premier sports teams, ambassadors and high academic achievers.

**Achievers Jerseys:

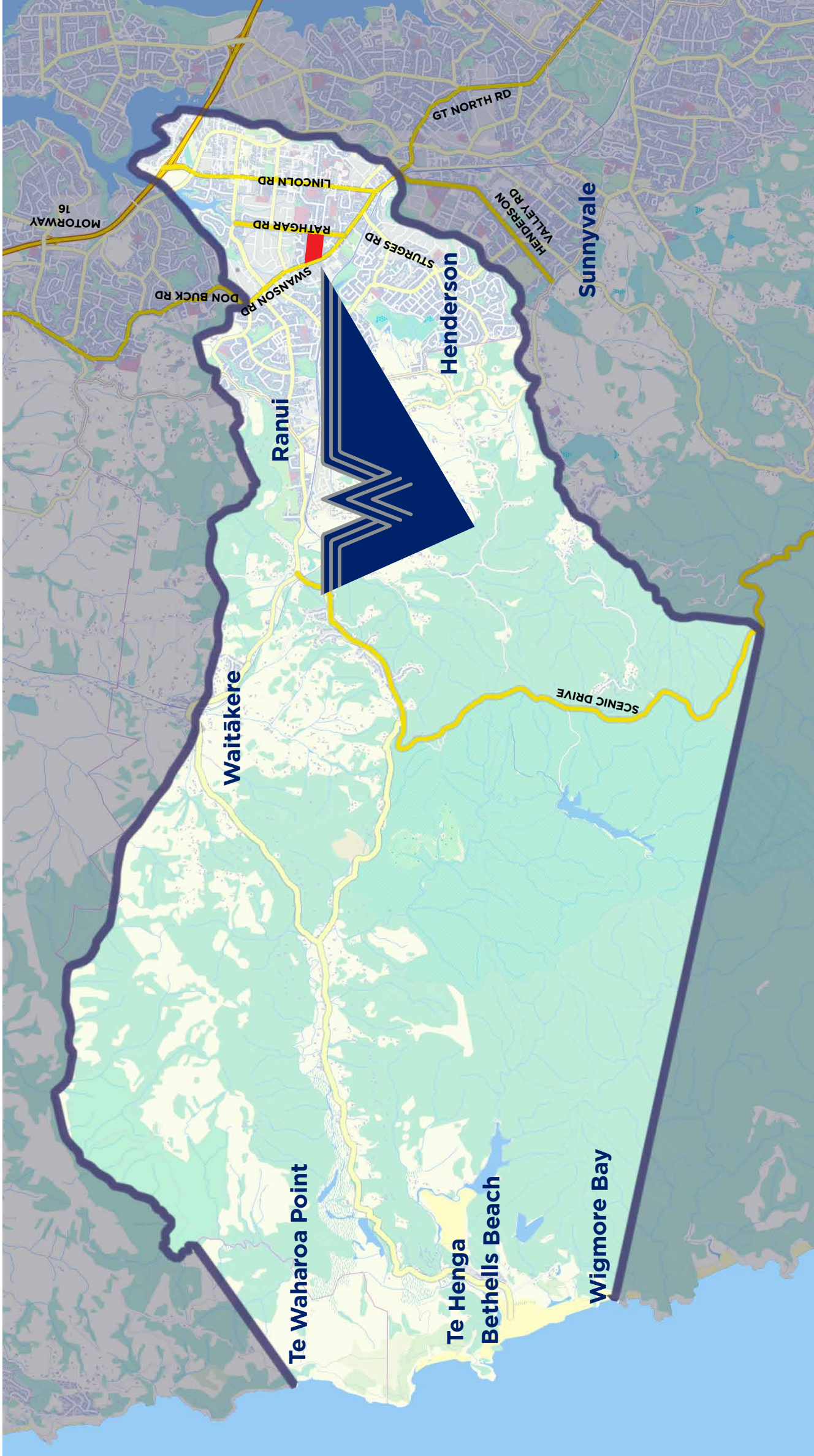
This smart wool jersey with College logo may be purchased by students who have attained their NCEA Level 1 Certificate or higher. Only these students may wear the jersey.

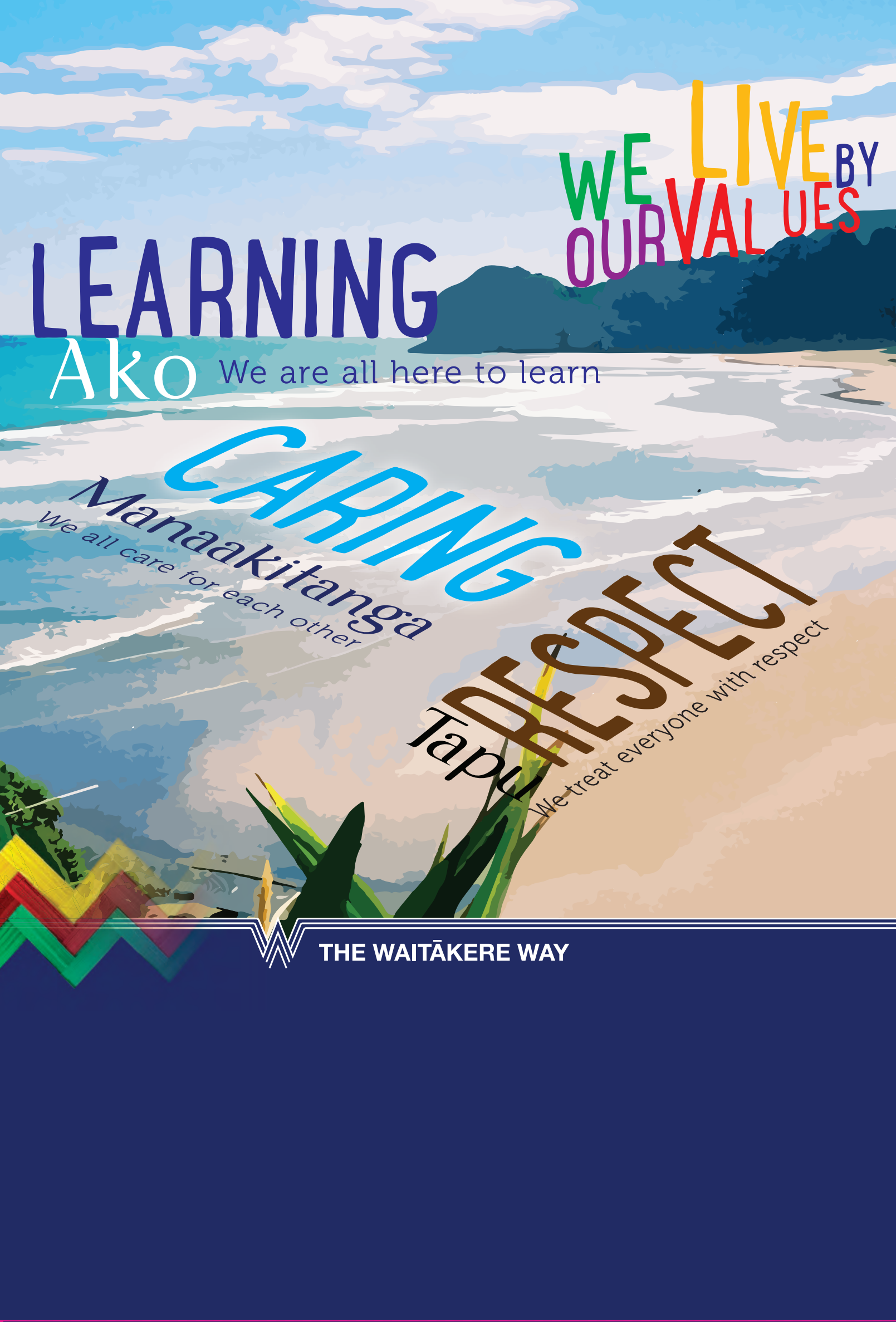


WAITĀKERE COLLEGE

Waitākere College in-zone

For information regarding trains please contact: secretary@waitakerecollege.school.nz Phone: 09 836 7890 ext 0
For detailed information please go to: www.waitakerecollege.school.nz/our-school/information/bus-transport-information
For a full list of streets within our zone go to: www.waitakerecollege.school.nz/images/School-Zone-Streets-2019.pdf





WE LIVE BY
OUR VALUES

LEARNING

Ako We are all here to learn

CARING

Manaakitanga
We all care for each other

Tapu RESPECT
We treat everyone with respect

THE WAITĀKERE WAY



42 Rathgar Road, Henderson
PO Box 21144, Henderson, Auckland
• Phone 09 836 7890
Email: secretary@waitakerecollege.school.nz