



Vocational Pathways and Academy Opportunities



WAITĀKERE COLLEGE

Welcome to a new experience on your way to a career

Waitākere College Vocational Pathways

These programs offer you:

Real life experience

New skills

Tertiary qualifications

Opportunity to explore future careers

Waitākere College - recognised nationally for education excellence

We are honoured to be the winner of the Prime Minister's Excellence Award for Teaching and Learning and to have been a finalist for Excellence in Leadership.

Excellence in Leading - Atakura

recognising the strength of our student leaders, the distributed leadership amongst our teachers, the high quality leadership from our Deans and Heads of Department, as well as the strategic thinking and high calibre of our senior leadership team.

Excellence in Teaching and Learning - Atatū

recognising that high quality teaching is the norm at Waitākere College, with a curriculum adapted to respond to student interests, including e-Learning and vocational pathways such as the Medical Science Academy.

Excellence in Teaching and Learning

To meet the needs of their students, Waitākere College focused on work-based futures and alignment with industry to establish innovative trades' academies, including in the health sector. Alongside deeper connections with students, their families and whānau, every student now leaves school as a confident achiever, able to realise their dreams.

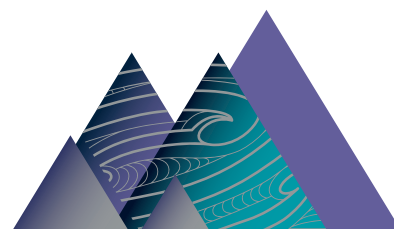
- Ministry of Education

I encourage you to explore the many and clear pathways offered at the school that can lead to successful and satisfying careers.



Mark Shanahan

Principal



The Prime Minister's / Te Pirimia
EDUCATION / NGĀ TOHU
EXCELLENCE / KAIRANGI
AWARDS / MĀTAURANGA

Waitākere College offers students **insights into vocational pathways** and access to experience many **workplace environments**

The Ministry of Education after consulting with government agencies, education, industry and employer representatives created a map linking education and employment.

It is known as Vocational Pathways.

Vocational Pathways divides occupations into six main sectors:

Construction and Infrastructure (CI)

Service Industries (S)

Creative Industries (C) or (CR)

Primary Industries (P) or (PI)

Manufacturing and Technology (MT)

Social and Community Services (SC)

Each sector has its own colour. Within each sector a wide range of Achievement and Unit Standards are seen as useful and recommended for that sector (known as sector related).

A student can gain a Vocational Pathway endorsement along with an NCEA Certificate at Level 2 if the credits achieved include a minimum of 60 credits from one or more pathway with at least 20 of these credits being from the list of sector related credits. This will be shown on the student's vocational profile and as an additional award on the NCEA certificate.

The purpose is that an employer or tertiary provider can see that a student has made option choices that match with their industry's particular requirements.

More information about Vocational Pathways can be found on the Youth Guarantee website <http://youthguarantee.net.nz/vocational-pathways/>. Subjects at Waitākere College that have standards aligned to one or more of the Vocational Pathways are shown in the senior subject selection guide. Waitākere College also offers Vocational Pathways programs.



On the NZQA website students can look up what their own unique graph will look like. Here is a sample:



Vocational Pathways

matching education to careers

	Construct. & Infrast.	Manufact. & Technology	Primary Industries	Service Industries	Social & Community	Creative Industries
APRENTICESHIPS AND NZ CERTIFICATES (NCEA LEVEL 2)	Boat Builder Bricklayer Building Contractor Caretaker Carpenter Crane Operator Electrician Floor & Waller Tiler Floor Covering Installer Landscape Gardener Line Mechanic Locksmith Mine/Quarry Worker Painter & Decorator Plumber, Gasfitter Property Manager Roading Construction Roofer Scaffolder Water Treatment	Automotive Electrician/Technician Baker Boat Builder Chemical Production Operator Clothing Designer Clothing Pattern Maker Collision Repair Technician Dairy Products Maker Electrician Food & Beverage Factory Worker Jeweller Lighting Technician Marine Engineer Meat/Seafood Processor Mechanical Engineering Plastics Technician Telecommunications Tyre Technician Winemaker Wood Machinist	Animal Attendant Aquaculture Farmer Arborist Building & Construction Labourer Crop Farmer Dairy Products Maker Dog Trainer Farm Worker Fencer Fishery Officer Fishing Skipper Forestry & Logging Worker Grounds person Horse Trainer Landscape Gardener Meat/Seafood Processor Nursery Grower/Worker Ranger Winemaker Wood Processing	Accounts Officer Aircraft Loader or Refueller Bank Worker or Mortgage Broker Bartender Beauty Therapist Café/Restaurant Manager Chef Cleaner Contact Centre Worker Fitness Instructor Flight Attendant Florist Hairdresser Hotel Manager Legal Executive Motor Vehicle Sales Receptionist Retail Manager Tourism Operator Truck Driver	Air Force Officer Community Worker Customs Officer Dental Assistant Dispensing Optician Emergency Management Fire-fighter Health & Safety Inspector Health Promoter Immigration Officer Legal Clerk Library Assistant Minister Nanny Nursing Support & Care Police Officer Recreation Coordinator Security Officer Teacher Aide Translator	Actor Beauty Therapist Body Artist Clothing Designer Clothing Pattern Maker Copywriter Dancer Film & Video Editor Film Camera Operator Florist Hairdresser Jeweller Make-Up Artist Media Producer Musician Photographer Sewing Machinist Signmaker TV Presenter Upholsterer
DIPLOMA (NCEA LEVELS 2 OR 3)	Architectural Technician Civil Engineering Geospatial Specialist Interior Design Property Manager Quantity Surveyor Survey Technician	Aircraft Maintenance Architectural Technician Computer Support Database Administrator Electrical Engineering Science Technician Telecommunications	Forestry Manager Science Technician	Sales & Marketing Air Traffic Controller Office Manager Insurance Salesperson Flying Instructor	Anaesthetic Technician Career Consultant Early Childhood Teacher Librarian Medical Laboratory Techn Naturopath Paramedic Psychotherapist Teacher of ESOL Youth Worker	Advertising, Sales, Marketing Interior Designer Editor Architectural Technician Graphic Designer Web Developer Editor
DEGREE (LEVEL 3 AND UNIVERSITY ENTRANCE)	Architectural Technician Civil Engineer Energy Auditor Environmental Engineer Landscape Architect Mining Engineer Boat Designer Project Manager Surveyor Architect Environmental Engineer Mining Consultant	Agricultural Engineer Architect Biomedical Engineer Chemical Engineer Civil Engineer Food Technologist Forensic Scientist Game Developer Industrial Designer Chemist Mechanical Engineer	Agricultural Consultant Biotechnologist Environmental Scientist Forestry Scientist Geophysicist Landscape Architect Marine Biologist Microbiologist Veterinarian Zoologist Agricultural Scientist Geologist Horticultural Scientist	Accountant Aeroplane Pilot Economist Graphic Designer Industrial Designer Intelligence Officer Lawyer Meteorologist Pharmacist Project Manager Archivist Conservator Curator Dietician Medical Physicist	Dentist Education Advisor Environmental Health Officer Foreign Policy Officer Health Services Manager Medical Laboratory Scientist Social Worker Teacher Urban/Regional Planner Anaesthetist Audiologist Judge Psychologist Doctor Nurse	Animator Architectural Technician Game Developer Industrial Designer Historian Landscape Architect Naval Architect Archivist Conservator Curator

I have grown to be more open-minded about different learning and teaching styles and more decisive about what I want to pursue in the future - Charlotte

Vocational Pathway Programs (Yrs 12, 13)

Gateway

Provides opportunities for Year 12/13 students who have achieved NCEA Level 1 to experience first-hand, a job in their area of interest while completing Industry Unit Standards that count towards NCEA.

Students select Gateway as one of their options and are in the workplace for one day of each week. In school, students complete Standards related to their chosen industry and also Standards employers require of those starting in the workplace.

Health Careers Academy

For Year 12/13 students with a vocational interest in the health and community services industries.

Students combine their learning in school with specialist learning taking place one day a week in a tertiary college.

Service Academy L2/L3

A programme targeted to students who are serious about joining any of the services upon completion of secondary school - Police, Army, Navy, Air Force, Customs.

Mechatronics Academy

Combining computer programming and robotics, students in this course spend time off-site and in university settings developing thinking and practical skills in robotics technology. (Part of AWVA)

The College offers a number of special programs to give you a taste of life in a Tertiary College or in a workplace while still having support and other subjects that school offers.

You need to apply to Mrs Carter or Ms Howell to be part of these programmes.



Engineering Academy

Open to Year 12/13 students who have completed Level 1. This allows students to make a start on their engineering apprenticeship while still at school. Students combine workshop time with tertiary learning and experience in engineering workplaces. (Part of AWVA)

Hospitality Academy

This allows students to extend their chef and hospitality skills and qualifications to a tertiary level by gaining experience both on and off-site in a commercial setting while completing NCEA qualifications (Part of AWVA).

Building Academy

This offers Year 12/13 students valuable real-life trade experience off-site while completing their national certificate.

Students also have a work placement. (Part of AWVA)

Automotive Academy

This offers Year 12/13 students valuable real-life trade experience both on and off-site while completing their national certificate.

Students also have a work placement. (Part of AWVA)

AWVA is the Auckland West Vocational Academy. It is an exciting innovation involving Waitākere College, Green Bay High Kelston Boys, Massey High, Rutherford College and UNITEC. Supported by the Ministry of Education, it provides enhanced choice, opportunity and extension for students in Years 12 and 13.

Parallel Pathways

For some students, their successful career will be the result of full-time study at University or Polytech. However, our community and employers now also recognise the equal worth and importance of qualifications and skills gained by way of training in industry.

University Pathway

Universities are a popular choice for students studying towards a tertiary qualification - this is known as the academic route towards a career. After approximately 3-5 years of full time study you will (as long as you have passed) complete a tertiary degree or diploma, which you can then use to go out and find a job.



Industry Training Pathway

Industry training allows you to get health and safety and practical site knowledge, while you learn the skills you need to do the job, and get paid at the same time. Industry Training requires tertiary education too. You complete practical learning and assessments at work.

After 3-4 years of industry training (eg working towards a New Zealand Apprenticeship or NZ Certificate you will walk away with experience and specialised trade credentials.

What's the best option for you?

	University	Industry Training
What will this cost you?	Undergraduate or Bachelor's degree can cost between \$18,000 - \$25,000	Few costs to you.
How long will it take?	This will take you 3-5 years to complete.	This will take you 3-4 years to complete.
Will I get a job at the end?	Yes, but you will need to approach companies and apply for jobs available.	You will already have a job and your training will allow you to step up and progress.
What education will I get?	Diploma/Degree	NZ Certificate/Apprenticeship/Diploma/Degree
Will I get work experience?	You will need to approach companies for opportunities for work experience in the career path of choice.	Yes, you will already have a job and be getting practical experience.
Long term career prospects	Technical/specialised roles or work your way to manager/executive roles.	Technical/specialised roles or work your way to supervisor/manager roles. A lot of trades people start their own business.



Why an **Apprenticeship**?

What are the benefits of an apprenticeship?

- **EARN AS YOU LEARN!!!**
- **No student loan to pay off**
- **Finish your studies already experienced**
- **Gain professional and practical SKILLS**
- **Skilled apprentices are highly sought after**
 - **Gain a tertiary level qualification**
 - **Qualified tradespeople are in demand**

Apprenticeships usually take around 3 years (a similar length of time to a bachelor's degree) and lead to a nationally recognised Level 5 qualification.

The best way to learn is by doing, and with apprenticeships you will get the opportunity to apply the skills you learn as you go. By the time you finish your apprenticeship you will be ready to take a step up in your career, instead of just starting out in one.

GET STARTED AT SCHOOL

through our Academies and Gateway programmes.

ACADEMIES

Academy students engage in a comprehensive learning programme focussed on the development of theoretical knowledge and practical skills targeted at their chosen vocation. We are recognised as a best practice model for our successful implementation of these programmes. Students also gain 'work ready' skills such as time-management and workplace communication.

Automotive Academy

Students in this academy develop hands-on skills preparing them for the automotive industry while also attending tertiary training.

Automotive Academy operates inside school 2.00 pm to 6.00 pm one day a week. Students also go off site one day a week to a tertiary provider (UNITEC). Credits gained towards NCEA L2 and the New Zealand Certificate in Automotive count as part of the pre-trade training in Automotive Engineering.

Two lines in the timetable are compulsory. Vocational Gateway - NCEA credits gained in workplace health and safety, first aid, driving, curriculum vitae, future planning and formal interviews. L2 Engineering students must also complete L2 English, maths and Academy science/physics/chemistry achieving a minimum of 14 credits in each subject if they wish to take up an apprenticeship in this field.

This Academy is part of AWVA.

Endorsement in: Manufacturing and Technology

Related Careers: Automotive workshop engineering, automotive electrical and electronics, automotive fuel systems and exhaust systems, automotive preventive maintenance, automotive transmission systems, engineering.



Building Academy

Students are involved in practical, real life building projects and complete a component of the New Zealand Certificate of Allied Building and Construction.

Level 2 Building Academy operates inside the school timetable. Students have a double option for building back to back and a VGT option line.

Level 3 Building Academy operates inside school on a Tuesday afternoon 2.00 pm to 6.00 pm. Students are also timetabled into a VCP option line.

Students must have attained or be working on achieving a minimum of 14 credits in English, maths, physics/chemistry. This is the minimum requirement for a student to cope with the theory in an apprenticeship. Inside the school timetable students will be in a VGT (Vocational Gateway) class at Year 12 or VCP (Vocational Pathways) at Year 13. This is to ensure that students are given the time to catch up on work missed while out on Academy during the week and to enable pastoral care of individuals.

This Academy is part of AWVA.

Endorsement in: Construction and Infrastructure

Related careers: Building, excavation, kitchen/bathroom design and build, carpentry, joinery, flooring, drafting, quantity surveying, engineering, drain laying, roofing, tiling, glazing, painting, plastering.



Engineering Academy

Students in Year 13 can complete the first year of a Competenz engineering apprenticeship. To complete this is a two year commitment. Students applying need to have completed Engineering in Year 12 at Level 2. Students go off site one day a week to a tertiary provider (UNITEC) where they complete a welding course. In Year 13 students are placed out on work experience in the Engineering sector, one day a week for up to 20 weeks, once their welding course is completed.

Year 12 - Three option lines inside the timetable - two for Academy Engineering and one for Vocational Gateway. Students must also include in their timetable L2 English, maths and science/physics/chemistry achieving a minimum of 14 credits in each subject.

Year 13 - One engineering option line inside the timetable plus Tuesdays 2.00pm to 6.00pm in the Engineering workshop. One option line for VCE inside the timetable to enable students to catch up on work missed due to one day a week out of school for tertiary learning and then industry placement.

This Academy is part of AWVA.

Endorsement in: Construction and Infrastructure; Manufacturing and Technology

Related careers: machining, maintenance, toolmaking, machining, heavy fabrication, light fabrication, heating, ventilation and air conditioning, refrigeration, plumbing, gas fitting, electrical.



Health Academy

This Academy offers students the opportunity to study in a tertiary environment one day a week. They will participate in subjects that are not offered inside the school curriculum in specialised areas of the health industry, gaining 10-14 NCEA credits per semester.

Level 2 go off site to Henderson UNITEC campus on a Thursday. Programmes offered one semester: Health the Community Part 1 and Part 2. Level 2 have a line inside the timetable for catching up on work missed the day they are out of school for tertiary.

Level 3 off site at Mt Albert UNITEC campus on a Friday. Level 3 have a line inside the timetable - VCP for catching up on work missed the day they are out of school at tertiary.

Programmes offered for one semester: Health and the Community Investigating Health and Health Practice.

Endorsement in: Service Industries, Social and Community Services

Related careers: Health related careers: nursing, mental health, physiotherapy, social services.



Hospitality Academy

Students gain introductory skills and qualifications towards the New Zealand Certificate in Cookery Level 3 in both school and a tertiary environment.

Hospitality Academy operates inside school on Tuesday afternoon from 2.00pm to 6.00 pm. Students go off site one day a week for Terms 1, 2 and 3 where they learn in a tertiary environment with commercial kitchens. One option line in the timetable - VCP.

The Academy is part of AWVA.

Endorsement in: Service Industries

Related careers: Hospitality front of house, barista, chef, customer service.

The lessons we attend out of school are a lifetime opportunity and we learn life skills. We are understanding the environment around us and how to help it - ShiQin



Mahi-a-Toi Academy

A programme where students will analyse factors that influence the quality of individual performance in applied settings. Students complete units based on Toi Maori which covers: Ta Moko, Maori Performing Arts, Whakairo, korero and Kowhaiwhai. Students apply advanced theory and apply their learning in practical settings.

Students go off site one day a week to a tertiary provider (UNITEC) for one semester plus attend the Mahi a Toi Academy at Rutherford College one afternoon a week from 2.00 pm to 6.00 pm. Students earn credits towards L2/3 NCEA both at UNITEC and Rutherford College while remaining a Waitākere College student. One option line in the timetable - Vocational Gateway - NCEA credits gained in work place health and safety, first aid, driving and curriculum vitae.

The Academy is part of AWVA.

Endorsement in: Creative Industries

Mechatronics Academy

Students in this Academy learn to apply technological design into real life outcomes in areas like robotics. This Academy operates outside of school from 2.00 pm to 6.00 pm one day a week at Rutherford College, Terms one, two and three. Term three students also attend a tertiary provider. Students must be capable and have a high level of achievement in L1 English, maths and physics.

Students gain NCEA credits in work place health and safety, first aid, driving and curriculum vitae.

Endorsement in: Manufacturing and Technology

Related careers: Electronics, plastics, production engineer, technician, programmer, computer science, aircraft technician.



Service Academy

The programme has been established with the support of The Ministry of Social Development, MOE and the NZ Defence Force to foster skills and values that enable students to take a positive role in society. The programmes instil the ethos and values of our NZ Defence Force - commitment, comradeship, courage and integrity.

L2: Students attend off site: an induction camp, outdoor bush skills and survival skills camp, Leadership Development and Great Adventure Challenge. First Aid and safety management in the workplace are an important part of the program.

The Service Academy is for students who can benefit from direction, structure and personal discipline. The aim of the programme is to foster skills that enable students to take a positive role in society.

L3: Students attend an induction camp and attend various offsite and overnight activities. The L3 programme helps prepare students for entry into services like the Police, NZ Defence Force, Security and Customs.

All Service Academy students have two option lines in the timetable, tutor class together. English and maths are required.

Endorsement in: Primary Industries; Service Industries; Social and Community Services

Related careers: Army, Airforce, Navy, Police, customs, security.

Gateway has given me the opportunity to work with others outside of school and experience what it's like to work first hand so I have a better idea now and prepare for the future - Adrian

The Gateway Programme at Waitākere College

ENDORSEMENT IN:

Service Industries

Creative Industries

Primary Industries

Social and Community Services

Manufacturing and Technology

Construction and Infrastructure



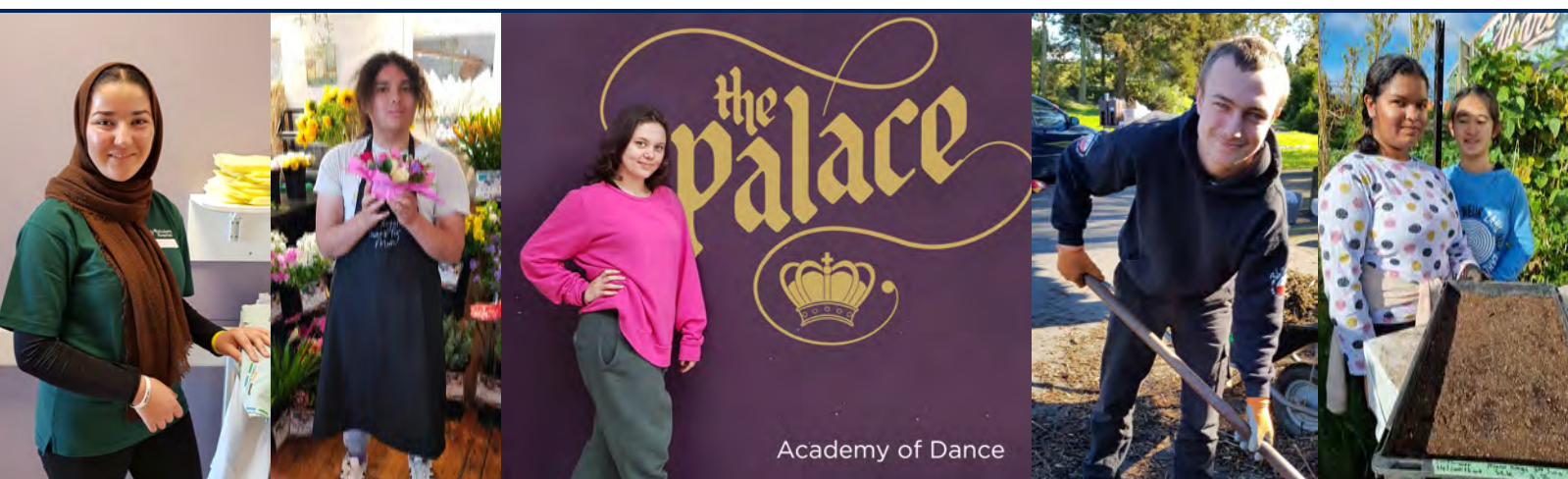
The Gateway Programme is a nationally recognised work experience initiative funded by the Tertiary Education Commission (TEC). Gateway students participate in an individualised learning plan that incorporates work experience with industry training in a career interest of their choice. Gateway complete a workplace first aid certificate and participate in health and safety training before they are ready for a work placement.

Where possible, students may also have the opportunity to get licenced as a learner driver.

In class, Gateway students complete their CV, explore their family lineage/heritage, research future career choices, apply problem-solving techniques, find a work vacancy and apply using a targeted CV.

This coursework enables students to gain specialist workplace skills for future employment. Whilst on work placement students demonstrate soft-skills such as time-management, self-management, personal presentation, a positive attitude and professional interactions with other people.

Popular work interests include retail, tourism, teaching, security, fitness, hospitality, hair and beauty, and performing arts.



- Work Experience
- Industry Knowledge
- Job Opportunities



Opportunities through Waitākere College
await in all core areas of Vocational Pathways:

Construction and Infrastructure

Service Industries

Creative Industries

Primary Industries

Manufacturing and Technology

Social and Community Services



[WaitakereCollege.school.nz](https://www.waitakerecollege.school.nz)

42 Rathgar Road, Henderson
PO Box 21144, Henderson, Auckland
Phone (09) 836 7890

Email: secretary@waitakerecollege.school.nz

**Become
your best.**